

# Gate Valves

DEMCO<sup>®</sup> DM Style





## DRILLMAX®

**Performance.**

**Reliability.**

**Availability.**

Drillmax is a premier manufacturer of drill pipe float valves, gate valves, and shear relief valves. Since 1996, the company has grown organically, through a commitment to produce quality products and deliver on performance, reliability, and availability to customers in the oil and gas, water well, and air drilling industries.

## Drillmax DEMCO® DM Style Gate Valves (Mud Valves)

Drillmax Gate Valves are engineered for the rigorous requirements of today's oilfield applications. The seats are designed for a complete, tight shut off after every closing cycle. Once closed, line pressure forces the gate up against the downstream port sealing it against the rubber seat. Drillmax manufactures 7500 PSI Gate Valves modified from a DM Style 5000 PSI design. Both 5000 PSI and 7500 PSI Gate Valves meet and/or exceed the severe pressure demands of deep well drilling.

### Features

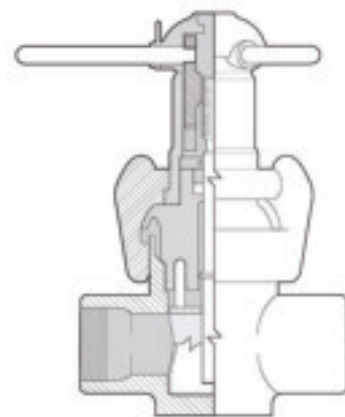
- Interchangeable with DEMCO® 5000 PSI mud gate valves.
- In-Line field repairability. For internal parts inspection, or routine maintenance, the bonnet assembly can be quickly removed from the valve body. Parts are replaced as needed, the bonnet assembly re-installed, and the valve is tested and returned to service.
- Open and close with ease. Double acting threads and rising stem design mean that opening and closing the gate happens quickly, and with minimal effort to rotate the handle assembly.
- Sight lens included on larger sizes. Allows viewing of the stem for determination of gate position, while also protecting the stem from dust and dirt.
- Drop-Tight Sealing. Exclusive seat design provides drop-tight shut-off which is accomplished by metal to rubber sealing.
- Bi-directional sealing design. The gate and stem are separate parts, which allows the slab style gate to move within the rubber seat in response to the direction and pressure of the drilling mud, or other media, flowing through the valve.
- Extensive Quality Assurance verification and testing prior to shipment.

### Connection Type

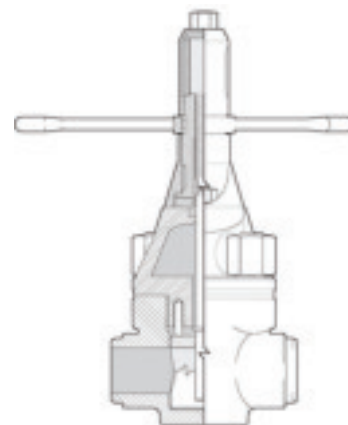
**Flanged End Connections** – This type of end connection does not require turning or welding the valve. The integral RTJ flanges are connected to matching pipe flanges with bolts and nuts.

**Threaded End Connections** – This type of end connection, also referred to as screwed, is suitable for applications up to 7500 PSI. Line Pipe (LP) and Eight Round (8RD) threads are available.

**Butt Weld End Connections** – This type of end connection is manufactured to match the pipe weld connection. The two beveled ends are butted together and welded in place. Welded connections are best suited for applications where frequent removal from the pipeline is not required.



Threaded End Connection



Butt Weld End Connection

## Part Number Assembly for Gate Valves.

Drillmax has made it easy for you to assemble your Gate Valve part number.

First, using the **Base Part Number Selection table** select the size, end type, and pressure (WP) from the available options to build your 4 digit Base Part Number.

Next, refer to the **Assembly Part Number Selection chart** to build the Gate Valve assembly part number. Begin by choosing the end connection type based upon your application. Continue selecting options for body configuration, stem material, gate material, seat inserts, seat elastomer and finally coating.

Have questions? Consult our sales support team for assistance.

## Base Part Number Selection

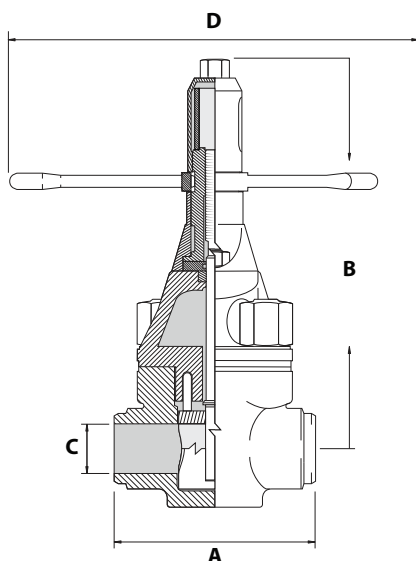
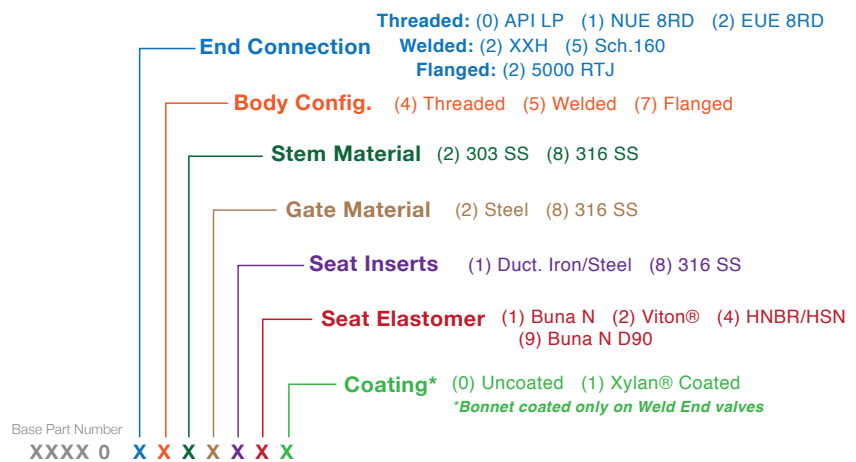
End Type		5000 PSI WP				7500 PSI WP		
		2" FP	3" FP	4" FP	5" x 4" RP	4" FP	2" x 3"	5" x 4" RP
Threaded End <sup>1</sup>	Base Part No	2028	3047	4420		7500		
	Weight, Lbs.	61	140	225		225		
Welded End <sup>2</sup>	Base Part No	2031	3056	4420	5420		2375	5475
	Weight, Lbs.	61	140	225	225		154	267
Flanged End <sup>3</sup>	Base Part No	2025	3038	4420				
	Weight, Lbs.	110	241	330				

<sup>1</sup> Threaded End Valves furnished for API Line Pipe or 8 Round Threads

<sup>2</sup> Welded End Valves furnished for SCH 160 or SCH XXH Connections

<sup>3</sup> RTJ Flanges comply with API standard 6A 1974

## Assembly Part Number Selection



Dimensions Chart		Pressure Rating and Size						
		5000 PSI WP 7500* / 10,000 PSI Test			7500 PSI WP 8000* / 11,250 PSI Test			
		2"	3"	4"	5" x 4"	4"	2" x 3"	5" x 4"
A Threaded & Weld	Full Port (FP)	9	11	13		13	11	
	Regular Port (RP)				13			13
	Flanged (RTJ)	12-1/8	15-5/8	18				
B (Open)	Full Port (FP)	13	18	24-5/8		24-5/8	18	
	Regular Port (RP)				24-5/8			24-5/8
C (Seat Bore)	Full Port (FP)	2	3	4		4	3	
	Regular Port (RP)				4			4
D	Full Port (FP)	14	19	23		23	19	
	Regular Port (RP)				23			23
F (Flange Diameter)		8-1/2	10-1/2	12-1/4				
Flange Bolts Quantity/Size		8 ea 7/8	8 ea 1-1/8	8 ea 1-1/4				
Ring Number (RTJ)		R24	R35	R39				

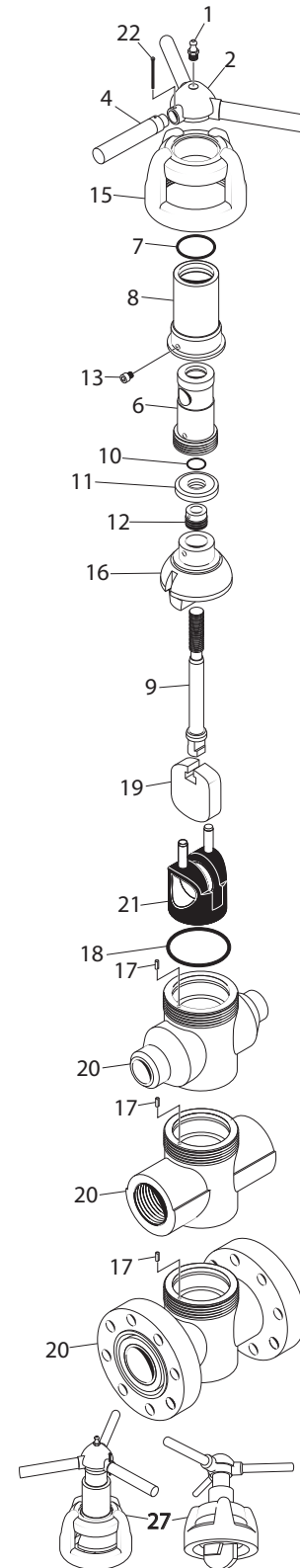
\* For Threaded Gate Valves

# 2" Drillmax Gate Valve PART NUMBER & KIT SPECIFICATIONS 5000 PSI

Ref	Description & Material	WT (lbs)	2" 5000 WP
1	Lube Fitting Steel	0.1	2510950
2	Hub Assembly Steel	5.0	2140687
4	Lock Handle Steel	1.0	2180910
6	Stem Screw Steel	3.0	2190130
7	Stem Screw Seal Buna N	0.1	5530224
8	Screw Housing Steel	4.0	2180480
9	Stem 303 SS 316 SS	1.0 1.0	2190312 2190318
10	Secondary Seal Buna N	0.1	5530210
11	Retainer Steel	1.0	2190400
12	Stem Seal Assembly (Incl. Bronze Bushing) Buna N H2S/HT 400 Viton® (NACE)*	0.1 0.1	2190491 2190496
13	Lock Screw Steel	.01	2560652
15	Coupling ASTM A487 Carbon Steel	16.0	2140453
16	Bonnet ASTM A487 Carbon Steel Uncoated Coated	7.0 7.0	2120370 2120371
17	Index Pin Steel	0.1	2190810
18	Bonnet Seal Buna N H2S/HT 400 Viton® (NACE)*	0.1 0.1	5530342 5540342
19	Gate Steel, Nickel Plated 316 SS	3.0 3.0	2180872 2180878
20	Body, Uncoated Steel Full Port Threaded (API-LP) Full Port Threaded 8RD Full Port - Weld Schedule XXH Schedule 160 Flanged-RTJ (R-24) Body, Coated Steel Full Port Threaded (API-LP) Flanged-RTJ (R-24)	29.0 29.0 29.0 29.0 29.0 29.0 29.0 29.0 29.0 29.0	22710030 22720030 23090230 23090530 21501000 22710031 21501001
21	Seat Ductile Iron - Buna N Ductile Iron H2S/HT 300 HNBR/HSN (NACE)* Ductile Iron H2S/HT 400 Viton® (NACE)* 316 SS Buna N 316 SS H2S/HT 300 HNBR/HSN (NACE)* 316 SS H2S/HT 400 Viton® (NACE)*	1.5 1.5 1.5 1.5 1.5 1.5	21807611 21807614 21807612 21807681 21807684 21807682
22	Pin, Lock Handle, 2" and 3" Steel	1.0	3540202
27	Bonnet Assembly with Gate	22.0	2120099

\* NACE = National Association of Corrosion Engineers. NOTE: For welded bodies (Butt Weld = BW; Weld End = WE) it is important to remove internal rubber parts before welding to prevent damage. Drillmax does not sell welded bodies with coating since welding destroys the coating.

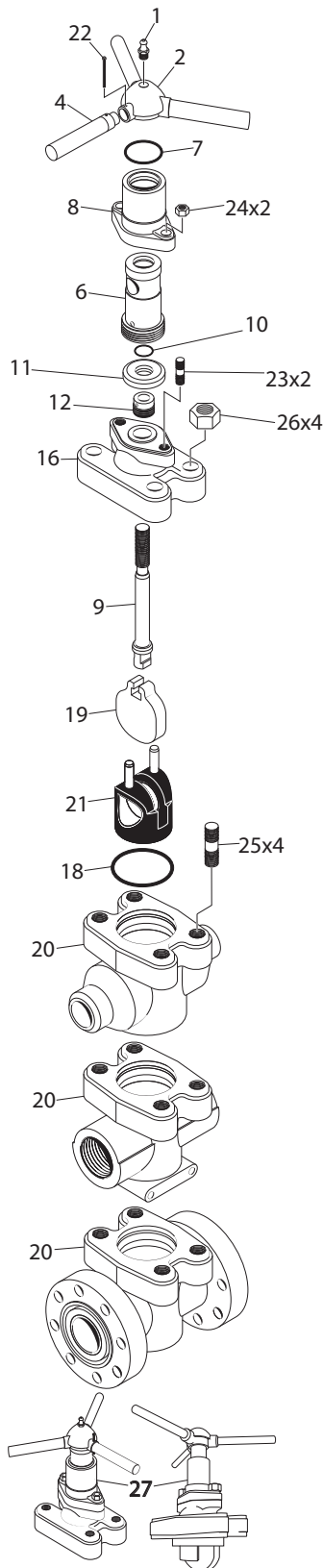
Seal, Minor, and Major Repair Kits			
Seal Kits - 4 Pcs. - Stem Screw Seal, Secondary Seal, Stem Seal Assembly (with Bronze Bushing), Bonnet Seal. 1 Ea - Ref 7, 10, 12, 18	1.0	2180099	
Minor Repair Kit - 3 PCS. - Bonnet Seal, Gate, Seat 1 Ea - Ref 18, 19, 21	5.0	2180199	
Major Repair Kit - 6 PCS. - Stem Screw Seal, Secondary Seal, Stem Seal Assembly (with Bronze Bushing), Bonnet Seal, Gate, Seat. 1 Ea - Ref 7, 10, 12, 18, 19, 21	5.0	2180299	
Major Repair Kit with Stem - 7 PCS. - Stem Screw Seal, Stem, Secondary Seal, Stem Seal Assembly (with Bronze Bushing), Bonnet Seal, Gate, Seat. 1 Ea - Ref 7, 9, 10, 12, 18, 19, 21	6.0	2180299S	



# 3" Drillmax Gate Valve

## PART NUMBER & KIT SPECIFICATIONS

### 5000 PSI



Ref	Description & Material	WT (lbs)	3" 5000 WP
1	Lube Fitting Steel	0.1	2510950
2	Hub Assembly Steel	8.0	3140688
4	Lock Handle Steel	1.0	3180920
6	Stem Screw Steel	1.0	3190143
7	Stem Screw Seal Buna N	0.1	5530226
8	Screw Housing Steel	6.0	3180520
9	Stem 303 SS 316 SS	2.0 2.0	3190322 3190328
10	Secondary Seal Buna N	0.1	5530212
11	Retainer Steel	1.0	3190410
12	Stem Seal Assembly (Incl. Bronze Bushing) Buna N H2S/HT 400 Viton® (NACE)*	0.2 0.2	3190501 3190506
16	Bonnet ASTM A487 Carbon Steel Uncoated Coated	40.0 40.0	3180030 3180031
18	Bonnet Seal Buna N H2S/HT 400 Viton® (NACE)*	0.1 0.1	5530433 5540433
19	Gate Steel, Nickel Plated 316 SS	5.0 5.0	3180862 3180868
20	Body, Uncoated Steel** Full Port Threaded (API-LP) Full Port - Weld Schedule XXH Schedule 160 Flanged-RTJ (R-35) Body, Coated Steel** Full Port Threaded (API-LP) Full Port - Weld Schedule XXH Schedule 160 Flanged-RTJ (R-35)	71.0 71.0 71.0 150.0 71.0 71.0 71.0 150.0	3970030 3990230 3990530 21501001 3970031 3990231 3990531 21501001
21	Seat Ductile Iron - Buna N Ductile Iron H2S/HT 300 HNBR/HSN (NACE)* Ductile Iron H2S/HT 400 Viton® (NACE)* 316 SS Buna N 316 SS H2S/HT 300 HNBR/HSN (NACE)* 316 SS H2S/HT 400 Viton® (NACE)*	4.0 4.0 4.0 4.0 4.0 4.0	31807811 31807814 31807812 31807881 31807884 31807882
22	Pin, Lock Handle, 2" and 3" A193 Steel, B7	1.0	3540202
23	Bonnet Stud (2 Required) Steel	1.0	3200660
24	Bonnet Stud Nut (2 Required) Carbon Steel	5.0	3530254
25	Body Stud (4 Required) A193 Steel, B7	2.0	3200760
26	Body Stud Nut (4 Required) Carbon Steel	5.0	3530244
27	Bonnet Assembly with Gate	56.0	3180098

\* NACE = National Association of Corrosion Engineers

\*\* Replacement bodies supplied with 4 Body Studs and Nuts. NOTE: For welded bodies (Butt Weld = BW; Weld End = WE) it is important to remove internal rubber parts before welding to prevent damage. Drillmax® does not sell welded bodies with coating since welding destroys the coating.

#### Seal, Minor, and Major Repair Kits

Seal Kits - 4 Pcs. - Stem Screw Seal, Secondary Seal, Stem Seal Assembly (with Bronze Bushing), Bonnet Seal. 1 Ea - Ref 7, 10, 12, 18	1.0	3190099
Minor Repair Kit - 3 PCS. - Bonnet Seal, Gate, Seat. 1 Ea - Ref 18, 19, 21	8.0	3190199
Major Repair Kit - 6 PCS. - Stem Screw Seal, Secondary Seal, Stem Seal Assembly (with Bronze Bushing), Bonnet Seal, Gate, Seat. 1 Ea - Ref 7, 10, 12, 18, 19, 21	9.0	3190299
Major Repair Kit with Stem - 7 PCS. - Stem Screw Seal, Stem, Secondary Seal, Stem Seal Assembly (with Bronze Bushing), Bonnet Seal, Gate, Seat. 1 Ea - Ref 7, 9, 10, 12, 18, 19, 21	11.0	3190299S

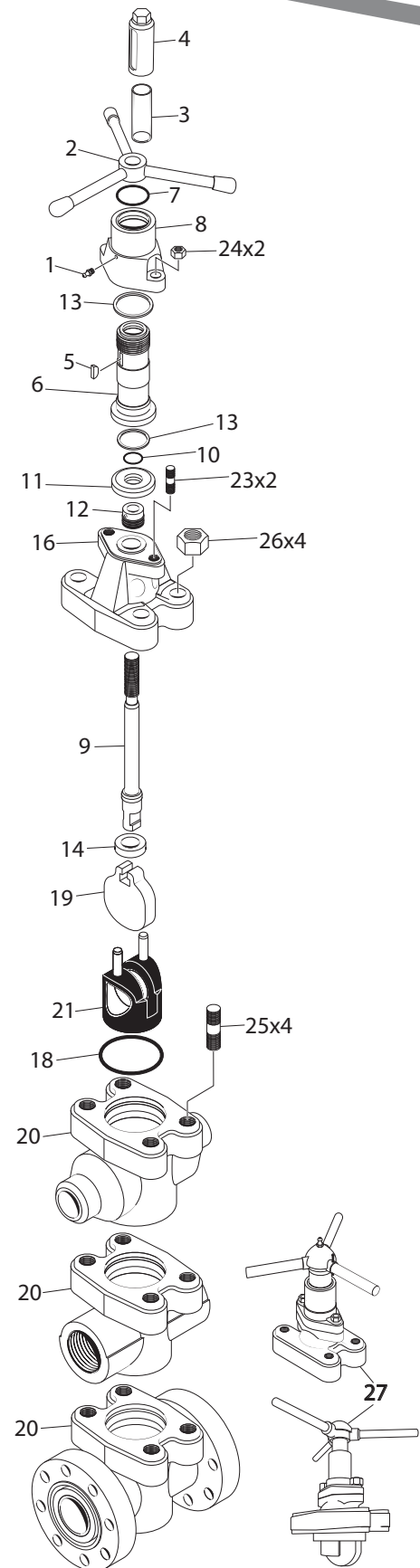


# 4" & 5" x 4" Drillmax Gate Valve PART NUMBER & KIT SPECIFICATIONS 5000 PSI

Ref	Description & Material	WT (lbs)	4" & 5" x 4" 5000 WP
1	Lube Fitting Steel	0.1	2510950
2	Hub Assembly Steel	11.0	4740140
3	Tube Clear Acrylic	1.0	4740590
4	Stem Cap Ductile Iron	3.0	4740110
5	Key Steel	0.1	4530016
6	Stem Screw Steel	4.0	4740160
7	Stem Screw Seal Buna N	0.1	5530226
8	Screw Housing Steel	9.0	4740180
9	Stem 303 SS 316 SS	3.5 3.5	4740392 4740398
10	Secondary Seal Buna N	0.1	5530214
11	Retainer Steel	1.0	4740130
12	Stem Seal Assembly (Incl. Bronze Bushing) Buna N H2S/HT 400 Viton® (NACE)*	0.2 0.2	4190511 4190516
13	Bearing (2 Required) Teflon/Phenolic	0.1	4740260
14	Down Stop Ring 303 SS	1.0	4740170
16	Bonnet ASTM A487 Carbon Steel Uncoated Coated	62.0 62.0	44190030 44190031
18	Bonnet Seal Buna N H2S/HT 400 Viton® (NACE)*	0.1 0.1	5530439 5540439
19	Gate Steel, Nickel Plated 316 SS	9.0 9.0	4190262 4190268
20	Body, Uncoated** Steel 4" Full Port Threaded (API-LP) Full Port Threaded 8RD Full Port - Weld Schedule XXH Full Port - Weld Schedule 160 Flanged-RTJ (R-39) Body, Coated** Steel 4" Full Port Threaded (API-LP) Flanged-RTJ (R-39) Body, Uncoated** Steel 5" x 4" Regular/Reduced Port-Weld Schedule XXH Regular/Reduced Port-Weld Schedule 160	120.0 120.0 120.0 120.0 260.0 120.0 260.0 116.0 116.0	42460030 424600308RD 42880230 42880530 42830230 42460031 42830231 42490230 42490530
21	Seat Steel Buna N Steel H2S/HT 300 HNBR/HSN (NACE)* Steel H2S/HT 400 Viton® (NACE)* 316 SS Buna N 316 SS H2S/HT 300 HNBR/HSN (NACE)* 316 SS H2S/HT 400 Viton® (NACE)*	6.5 6.5 6.5 6.5 6.5 6.5	4220721 4220724 4220722 4220781 4220784 4220782
23	Bonnet Stud (2 Required) A193 Carbon Steel, B7	1.0	4200720
24	Bonnet Stud Nut (2 Required) Carbon Steel	1.0	4530256
25	Body Stud (4 Required) A193 Steel, B7	5.0	4200770
26	Body Stud Nut (4 Required) Carbon Steel	2.0	4180900
27	Bonnet Assembly with Gate	102.0	44190099

\* NACE = National Association of Corrosion Engineers

\*\* Replacement bodies supplied with 4 Body Studs and Nuts. NOTE: For welded bodies (Butt Weld = BW; Weld End = WE) it is important to remove internal rubber parts before welding to prevent damage. Drillmax® does not sell welded bodies with coating since welding destroys the coating. 5"x4" body only manufactured in Butt Welded connection.

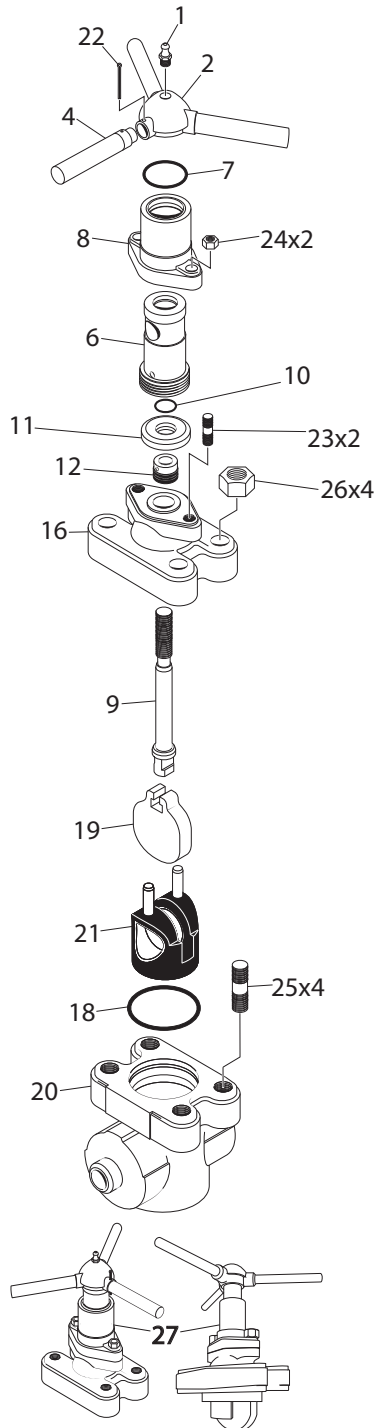


Seal, Minor, and Major Repair Kits			
Seal Kits - 4 Pcs. - Stem Screw Seal, Secondary Seal, Stem Seal Assembly (with Bronze Bushing), Bonnet Seal. 1 Ea - Ref 7, 10, 12, 18	1.0	4740099	
Minor Repair Kit - 3 PCS. - Bonnet Seal, Gate, Seat. 1 Ea - Ref 18, 19, 21	18.0	4740199	
Major Repair Kit - 6 PCS. - Stem Screw Seal, Secondary Seal, Stem Seal Assembly (with Bronze Bushing), Bonnet Seal, Gate, Seat. 1 Ea - Ref 7, 10, 12, 18, 19, 21	19.0	4740299	
Major Repair Kit with Stem - 7 PCS. - Stem Screw Seal, Stem, Secondary Seal, Stem Seal Assembly (with Bronze Bushing), Bonnet Seal, Gate, Seat. 1 Ea - Ref 7, 9, 10, 12, 18, 19, 21	22.0	4740299S	

# 2" x 3" Drillmax Gate Valve

## PART SPECIFICATIONS

### 7500 PSI



Ref	Description & Material	WT (lbs)	2" x 3" 7500 WP
1	Lube Fitting Steel	0.1	2510950
2	Hub Assembly Steel	8.0	3140688
4	Lock Handle Steel	1.0	3180920
6	Stem Screw Steel	1.0	3190143
7	Stem Screw Seal Buna N	0.1	5530226
8	Screw Housing Steel	6.0	3180520
9	Stem 316 SS	1.0	3190328
10	Secondary Seal Buna N	0.1	5530212
11	Retainer Steel	1.0	3190410
12	Stem Seal Assembly (Incl. Bronze Bushing) Buna N H2S/HT 400 Viton® (NACE)*	0.2 0.2	3190501HP 3190506
16	Bonnet ASTM A487 Carbon Steel Uncoated Coated	40.0 40.0	3180030 3180031
18	Bonnet Seal Buna N H2S/HT 400 Viton® (NACE)*	0.1 0.1	5530433-D90 5540433-D90
19	Gate 17-4PH	5.0	3180864
20	Body, Uncoated Steel** Schedule XXH	71.0	753990230
21	Seat 4130 Steel Buna N - D90 4130 Steel H2S/HT 300 HNBR/HSN (NACE)* 4130 Steel H2S/HT 400 Viton® (NACE)* 316 SS Buna N 316 SS H2S/HT 300 HNBR/HSN (NACE)* 316 SS H2S/HT 400 Viton® (NACE)*	4.0 4.0 4.0 4.0 4.0 4.0	31807811HP 31807814HP 31807812HP 31807881HP 31807884HP 31807882HP
22	Pin, Lock Handle, 2" and 3" Steel	1.0	3540202
23	Bonnet Stud (2 Required) A193 Steel, B7I	1.0	3200660
24	Bonnet Stud Nut (2 Required) Carbon Steel	5.0	3530254
25	Body Stud (4 Required) A193 Steel, B7	2.0	3200760
26	Body Stud Nut (4 Required) Carbon Steel	5.0	3530244
27	Bonnet Assembly with Gate	56.0	3180750

\* NACE = National Association of Corrosion Engineers

\*\* Replacement bodies supplied with 4 Body Studs and Nuts. NOTE: For welded bodies (Butt Weld = BW; Weld End = WE) it is important to remove internal rubber parts before welding to prevent damage. Drillmax® does not sell welded bodies with coating since welding destroys the coating.

Seal, Minor, and Major Repair Kits		
Seal Kits - 4 Pcs. - Stem Screw Seal, Secondary Seal, Stem Seal Assembly (with Bronze Bushing), Bonnet Seal. 1 Ea - Ref 7, 10, 12, 18	1.0	3190097
Minor Repair Kit - 3 PCS. - Bonnet Seal, Gate, Seat. 1 Ea - Ref 18, 19, 21	8.0	3190197
Major Repair Kit with Stem - 7 PCS. - Stem Screw Seal, Stem, Secondary Seal, Stem Seal Assembly (with Bronze Bushing), Bonnet Seal, Gate, Seat. 1 Ea - Ref 7, 9, 10, 12, 18, 19, 21	11.0	3190297S



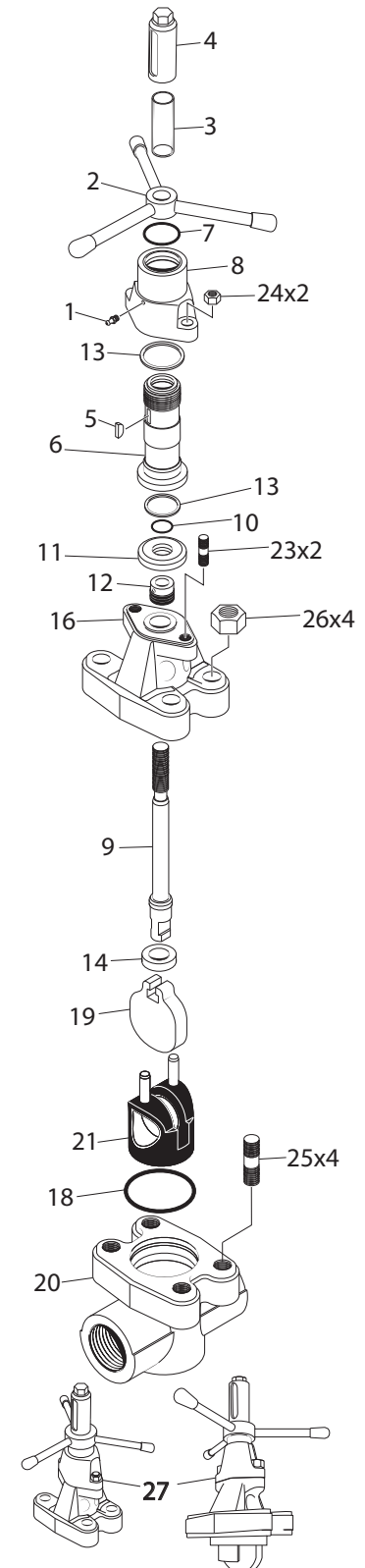
# 4" 8RD Drillmax Gate Valve PART NUMBER & KIT SPECIFICATIONS 7500 PSI

Ref	Description & Material	WT (lbs)	8RD Threaded 4" 7500 WP
1	Lube Fitting Steel	0.1	2510950
2	Hub Assembly Steel	11.0	4740140
3	Tube Clear Acrylic	1.0	4740590
4	Stem Cap Ductile Iron	3.0	4740110
5	Key Steel	0.1	4530016
6	Stem Screw Steel	4.0	4740160
7	Stem Screw Seal Buna N	0.1	5530226
8	Screw Housing Steel	9.0	4740180
9	Stem 303 SS 316 SS	3.0 3.0	4740392 4740398
10	Secondary Seal Buna N	0.1	5530214
11	Retainer Steel	1.0	4740130
12	Stem Seal Assembly (Incl. Bronze Bushing) Buna N	0.2	4190511HP
13	Bearing (2 Required) Teflon/Phenolic	0.1	4740260
14	Down Stop Ring 303 SS	1.0	4740170
16	Bonnet ASTM A487 Carbon Steel Uncoated Coated	62.0 62.0	44190030 44190031
18	Bonnet Seal Buna N	0.1	5530439-D90
19	Gate Steel, Nickel Plated 316 SS	10.0 10.0	4190262 4190268
20	Body, Uncoated** Threaded 8RD Steel	116.0	42460030758RD
21	Seat Steel Buna N - D90	8.0	4220729
23	Bonnet Stud (2 Required) A193 Carbon Steel, B7	1.0	4200720
24	Bonnet Stud Nut (2 Required) Carbon Steel	1.0	4530256
25	Body Stud (4 Required) A193 Steel, B7	5.0	4200770
26	Body Stud Nut (4 Required) Carbon Steel	2.0	4180900
27	Bonnet Assembly with Gate	102.0	44190099

\*\* Replacement bodies supplied with 4 Body Studs and Nuts

NOTE: For welded bodies (Butt Weld = BW; Weld End = WE) it is important to remove internal rubber parts before welding to prevent damage. Drillmax® does not sell welded bodies with coating since welding destroys the coating.

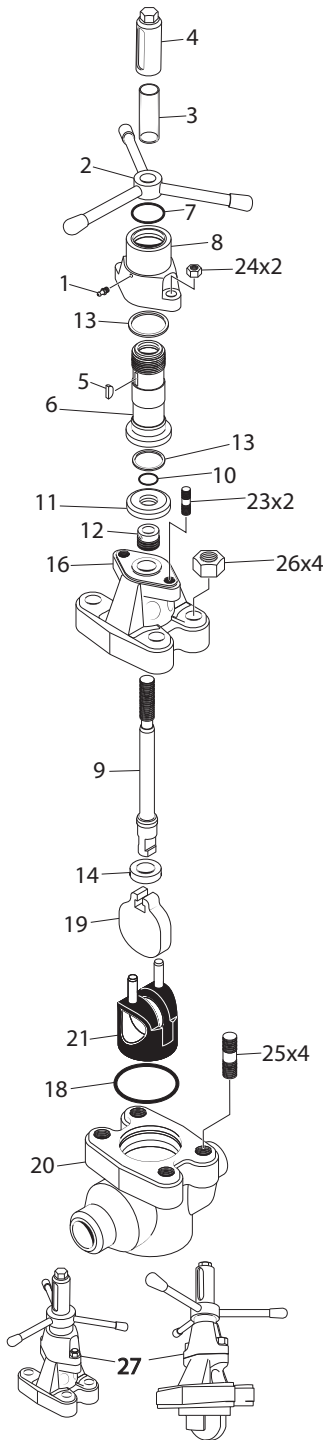
Seal Repair Kits		
Seal Kits - 4 Pcs. - Stem Screw Seal, Secondary Seal, Stem Seal Assembly (with Bronze Bushing), Bonnet Seal. 1 Ea - Ref 7, 10, 12, 18	1.0	4740097
Contact Drillmax Sales for additional kits (Minor, Major and Major with Stem)		



# 5" x 4" Drillmax Gate Valve

## PART SPECIFICATIONS

### 7500 PSI



Ref	Description & Material	WT (lbs)	5" x 4" 7500 WP
1	Lube Fitting Steel	0.1	2510950
2	Hub Assembly Steel	11.0	4740140
3	Tube Clear Acrylic	1.0	4740590
4	Stem Cap Ductile Iron	3.0	4740110
5	Key Steel	0.1	4530016
6	Stem Screw Steel	4.0	4740160
7	Stem Screw Seal Buna N	0.1	5530226
8	Screw Housing Steel	9.0	4740180
9	Stem 316 SS	3.0	4740398
10	Secondary Seal Buna N	0.1	5530214
11	Retainer Steel	1.0	4740130
12	Stem Seal Assembly (Incl. Bronze Bushing)	0.2	4190511HP
	Buna N	0.2	4190516
	H2S/HT 400 Viton® (NACE)*		
13	Bearing (2 Required) Teflon/Phenolic	0.1	4740260
14	Down Stop Ring 303 SS	1.0	4740170
16	Bonnet ASTM A487 Carbon Steel	62.0	44190030
	Uncoated	62.0	44190031
	Coated		
18	Bonnet Seal	0.1	5530439-D90
	Buna N	0.1	5540439-D90
	H2S/HT 400 Viton® (NACE)*		
19	Gate 17-4PH	10.0	4190264
20	Body, Uncoated** Steel 5" x 4" Schedule XXH	142.0	7542490230
21	Seat		
	4130 Steel Buna N - D90	8.0	4220721HP
	4130 Steel H2S/HT 300 HNBR/HSN - (NACE)*	8.0	4220724HP
	4130 Steel H2S/HT 400 Viton® (NACE)*	8.0	4220722HP
	316 SS Buna N	8.0	4220781HP
	316 SS H2S/HT 300 HNBR/HSN - (NACE)*	8.0	4220784HP
	316 SS H2S/HT 400 Viton® (NACE)*	8.0	4220782HP
23	Bonnet Stud (2 Required) A193 Carbon Steel, B7	1.0	4200720
24	Bonnet Stud Nut (2 Required) Carbon Steel	1.0	4530256
25	Body Stud (4 Required) A193 Steel, B7	5.0	4200770
26	Body Stud Nut (4 Required) Carbon Steel	2.0	4180900
27	Bonnet Assembly with Gate	102.0	44190750

\* NACE = National Association of Corrosion Engineers

\*\* Replacement bodies supplied with 4 Body Studs and Nuts. NOTE: For welded bodies (Butt Weld = BW; Weld End = WE) it is important to remove internal rubber parts before welding to prevent damage. Drillmax® does not sell welded bodies with coating since welding destroys the coating..

#### Seal, Minor, and Major Repair Kits

Seal Kits - 4 Pcs. - Stem Screw Seal, Secondary Seal, Stem Seal Assembly (with Bronze Bushing), Bonnet Seal. 1 Ea - Ref 7, 10, 12, 18	1.0	4740099
Minor Repair Kit - 3 PCS. - Bonnet Seal, Gate, Seat. 1 Ea - Ref 18, 19, 21	18.0	4740197
Major Repair Kit - 6 PCS. - Stem Screw Seal, Secondary Seal, Stem Seal Assembly (with Bronze Bushing), Bonnet Seal, Gate, Seat. 1 Ea - Ref 7, 10, 12, 18, 19, 21	19.0	4740297
Major Repair Kit with Stem - 9 PCS. - Stem Screw Seal, Stem, Secondary Seal, Stem Seal Assembly (with Bronze Bushing), Bearing (2 Ea), Bonnet Seal, Gate, Seat. 1 Ea; Ref 7, 9, 10, 12, 13, 18, 19, 21	22.0	4740297S

### Gate Valve Seal Kits, Minor Repair Kits & Major Repair Kits



Seal Kit  
5000 and 7500 PSI

- 1 ea Stem Screw Seal
- 1 ea Secondary Seal
- 1 ea Stem Seal Assembly (w/Bronze Bushing)
- 1 ea Bonnet Seal



Minor Repair Kit  
5000 and 7500 PSI

- 1 ea Bonnet Seal
- 1 ea Gate
- 1 ea Seat



Major Repair Kit  
5000 and 7500 PSI 4" 8RD

- 1 ea Stem Screw Seal
- 1 ea Secondary Seal
- 1 ea Stem Seal Assembly (w/Bronze Bushing)
- 1 ea Bonnet Seal
- 1 ea Gate
- 1 ea Seat



Major Repair Kit with Stem  
5000 and 7500 PSI 2" X 3"

- 1 ea Stem Screw Seal
- 1 ea Stem
- 1 ea Secondary Seal
- 1 ea Stem Seal Assembly (w/Bronze Bushing)
- 1 ea Bonnet Seal
- 1 ea Gate
- 1 ea Seat



Major Repair Kit with Stem  
7500 PSI 5" x 4"

- 1 ea Stem Screw Seal
- 1 ea Stem
- 1 ea Secondary Seal
- 1 ea Stem Seal Assembly (w/Bronze Bushing)
- 2 ea Bearings
- 1 ea Bonnet Seal
- 1 ea Gate
- 1 ea Seat

