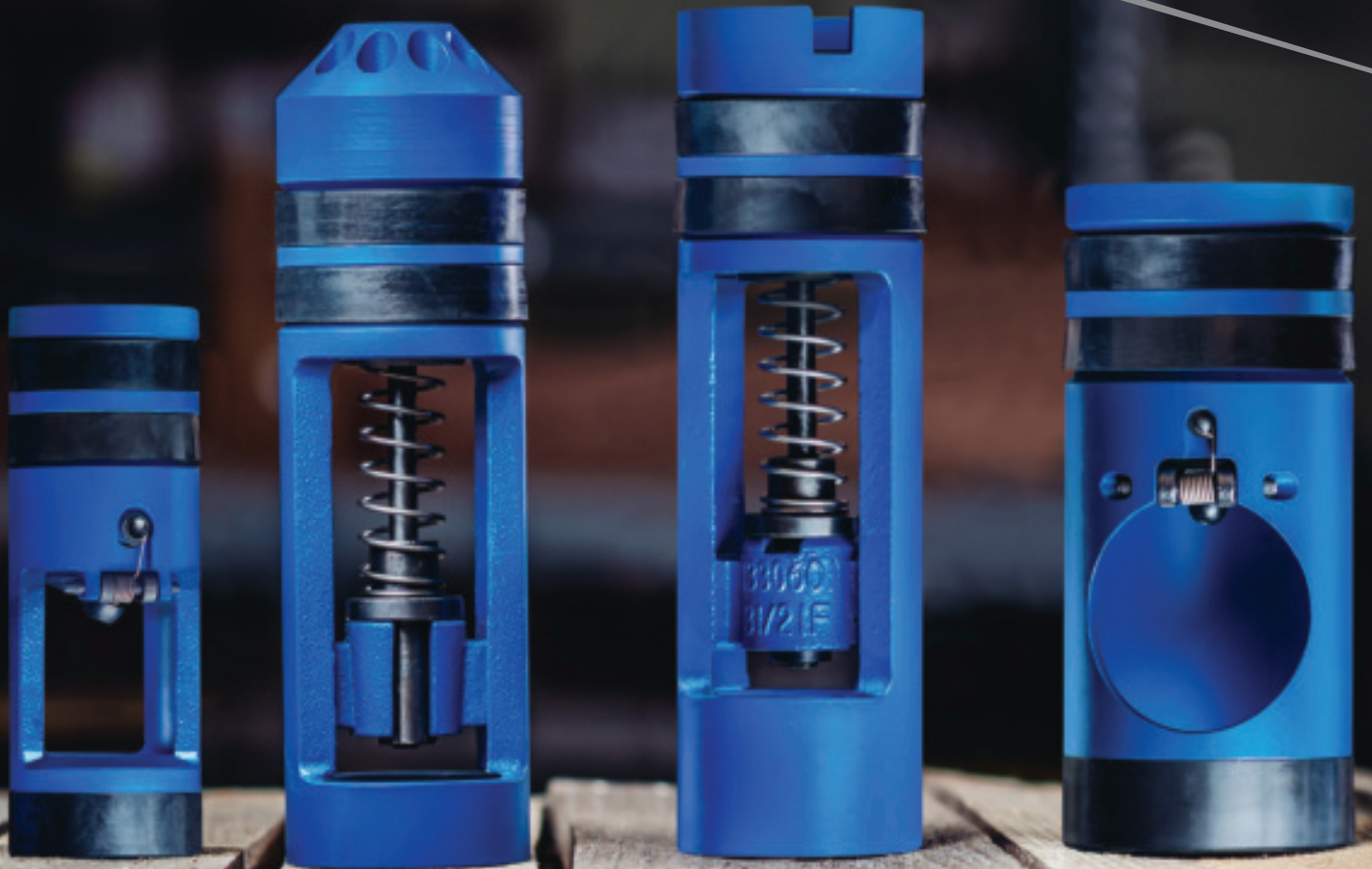


Drill Pipe Float Valves





DRILLMAX[®]

Performance.

Reliability.

Availability.

Drillmax is a premier manufacturer of drill pipe float valves, gate valves, and shear relief valves. Since 1996, the company has grown organically, through a commitment to produce quality products and deliver on performance, reliability, and availability to customers in the oil and gas, water well, and air drilling industries.

Drillmax Drill Pipe Float Valves

Drillmax manufactures a superior line of drill pipe float valves, with eight different types available in F-type plunger and G-type flapper valves. Drillmax valves are Xylan® coated, providing extra protection against erosion and corrosion and our heavy duty cages are standard for all sizes. They are interchangeable with Baker®/Forum and available for Standard, High Temp and H2/S service.

Drill Pipe Float Valve Sizes

Drillmax Float Valve Model F, FA, FBP, and FBPA Sizes	
1R	4R
1F2R	4F
2F3R	5R
3F	5F6R
3½ IF	6F

Drillmax Float Valve Model G, GA, GC, GCA and GS Sizes	
1F2R	4F
2F3R	4F GS*
3F	5R
3½ IF	5F6R
4R	



Model F Plunger Type The Model F is a plunger type float valve that allows constant fluid flow while drilling yet provides an instant shut-off if the flow is reversed. The piston stops back flow when breaking connections and keeps cuttings out of the drill string to help prevent clogged bits. In normal drilling operations the Model F offers economy and durability.



Model FA Ported Plunger Type The Model FA offers all the standard features of the Model F float valve with the added feature of a ported plunger, a special port which allows fluid a path through the center of the valve. This feature allows for an automatic partial filling of the drill pipe during run in and facilitates differential pressure measuring when required.



Model G Full Flow Flapper Type The Model G is a flapper type float valve that, when opened, offers unobstructed flow through the float valve. It's designed for abrasive drilling fluids. The flapper closes to prevent cuttings from entering the drill string when flow stops and acts to assist Blow Out Prevention (BOP) equipment in maintaining control over pressure in the drill string. The Model G features an investment cast flapper that is quick opening, allowing for full flow through the valve. It fully opens when joints are raised from the hole, preventing drilling mud from being released onto the rig floor.

Model GA Full Flow Ported Flapper Type with Carbide Orifice The Model GA is identical to the Model G except for a small hole in the flapper that makes the flapper ported. This port facilitates the ability for differential pressure readings at the surface. The port also allows for partial automatic filling of the drill pipe, during run in.



Model GC Full Flow Flapper Type with Auto Fill The Model GC is identical to the Model G but adds an automatic fill feature when going in the hole. A control arm holds the flapper slightly open during run in, allowing fill from the bottom. This removes the requirement for filling the drill pipe from the top, saving valuable time. Like the G, the valve fully opens when the first joint is raised, preventing environmental and safety risks associated with having mud on the rig floor. The valve can be run with the automatic fill option or in the closed position. The Model GC helps prevent pressure surges that could cause formation damage.



Model GCA Full Flow Ported Flapper Type with Auto Fill and Carbide Orifice The Model GCA is identical to the Model GA but adds an automatic fill feature that permits automatic filling of the drill pipe from the bottom and measuring differential pressures from the surface when necessary.



Model GS* Full Flow Flapper Type The Model GS is engineered for optimum performance for applications that require high flow and erosion resistance. Made of alloy steel tempered for H2S applications, the GS design reduces flapper spring and pin wear. The GS also allows for the ability of "double stacking" two GS float valves.



Model FBP & FBPA Plunger Type with Integral Baffle Plate The Model FBP & FBPA offers all the standard features of the Model F float valve with the added feature of an integral baffle plate at the top which is both heavy duty and shatterproof. This configuration can help to prevent damage from recorders or other wire-line tools that are dropped down the string.



*GS comes in size 4F short, contact Drillmax for other sizes.

Drillmax Drill Pipe Float Valves

PART NUMBER & REPAIR KIT CHART

Standard

Model F Plunger Type Standard							
Size	Brand	Float Valve		Rubber Repair Kit		Metal Repair Kit	
		Part Number	WT (lbs)	Part Number	WT (lbs)	Part Number	WT (lbs)
1R	Drillmax®	1310200	1.5	0120200	0.5	9290800	1.0
	Baker/Forum	480131200		016012200		015929800	
1F2R	Drillmax®	1310422	1.5	0120300	0.7	0110300	2.0
	Baker/Forum	480131422		016012300		016011300	
2F3R	Drillmax®	1320432	2.5	0120400	0.8	0110400	2.0
	Baker/Forum	480132432		016012400		016011400	
3F	Drillmax®	1330400	5.0	0120500	1.0	0110500	2.0
	Baker/Forum	480133400		016012500		016011500	
3½ IF	Drillmax®	1330600	6.0	0120600	1.0	0110500	2.0
	Baker/Forum	480133600		016012600		016011500	
4R	Drillmax®	1340200	7.0	0120700	1.0	0110700	2.0
	Baker/Forum	480134200		016012700		016011700	
4F	Drillmax®	1340400	10.0	0120800	1.0	0110800	3.0
	Baker/Forum	480134400		016012800		016011800	
5R	Drillmax®	1350200	9.5	0120900	1.0	0110900	4.0
	Baker/Forum	480135200		016012900		016011900	
5F6R	Drillmax®	1350462	19.0	0130000	1.1	0120000	5.0
	Baker/Forum	480135462		016013000		016012000	
6F	Drillmax®	1360400	28.0	0130100	2.0	0120100	8.0
	Baker/Forum	480136400		016013100		016012100	

Model FA Ported Plunger Type Standard							
Size	Brand	Float Valve		Rubber Repair Kit		Metal Repair Kit	
		Part Number	WT (lbs)	Part Number	WT (lbs)	Part Number	WT (lbs)
1R	Drillmax®	1210200	1.5	0120200	0.5	9290805	1.0
	Baker/Forum	480121200		016012205		015929805	
1F2R	Drillmax®	1210422	1.5	0120300	0.7	0110305	2.0
	Baker/Forum	480121422		016012305		016011305	
2F3R	Drillmax®	1220432	2.5	0120400	0.8	0110405	2.0
	Baker/Forum	480122432		016012405		016011405	
3F	Drillmax®	1230400	5.0	0120500	1.0	0110505	2.0
	Baker/Forum	480123400		016012505		016011505	
3½ IF	Drillmax®	1230600	6.0	0120600	1.0	0110505	2.0
	Baker/Forum	480123600		016012605		016011505	
4R	Drillmax®	1240200	7.0	0120700	1.0	0110705	2.0
	Baker/Forum	480124200		016012705		016011705	
4F	Drillmax®	1240400	10.0	0120800	1.0	0110805	3.0
	Baker/Forum	480124400		016012805		016011805	
5R	Drillmax®	1250200	9.5	0120900	1.0	0110905	4.0
	Baker/Forum	480125200		016012905		016011905	
5F6R	Drillmax®	1250462	19.0	0130000	1.1	0120005	5.0
	Baker/Forum	480125462		016013005		016012005	
6F	Drillmax®	1260400	28.0	0130100	2.0	0120105	8.0
	Baker/Forum	480126400		016013105		016012105	

Model G Full Flow Flapper Type Standard							
Size	Brand	Float Valve		Rubber Repair Kit		Metal Repair Kit	
		Part Number	WT (lbs)	Part Number	WT (lbs)	Part Number	WT (lbs)
1F2R	Drillmax®	1510422	2.0	*9880300	0.5	♦9880400	0.7
	Baker/Forum	480151422		051988300		051988400	
2F3R	Drillmax®	1520432	3.5	0130800	0.6	0130200	0.8
	Baker/Forum	480152432		016013800		016013200	
3F	Drillmax®	1530400	5.0	0130900	1.0	0130300	1.0
	Baker/Forum	480153400		016013900		016013300	
3½ IF	Drillmax®	1530600	6.0	^9820000	1.0	0700200	1.0
	Baker/Forum	480153600		051982000		052070200	
4R	Drillmax®	1540200	7.0	0140000	1.5	0130400	1.1
	Baker/Forum	480154200		016014000		016013400	
4F	Drillmax®	1540400	8.0	0140100	1.6	0130500	1.4
	Baker/Forum	480154400		016014100		016013500	
5R	Drillmax®	1550200	9.0	0140200	1.6	0130600	1.6
	Baker/Forum	480155200		016014200		016013600	
5F6R	Drillmax®	1550462	18.0	0140300	2.0	0130700	1.8
	Baker/Forum	480155462		016014300		016013700	

*1F2R flapper type rubber kits do not have seal retaining rings and have O-Rings instead of Valve Seals.

♦1F2R flapper type metal kits do not have seal retaining rings.

^This kit is for use on Drillmax Float Valves.

Model GA Full Flow Ported Flapper Type with Carbide Orifice Standard							
Size	Brand	Float Valve		Rubber Repair Kit		Metal Repair Kit	
		Part Number	WT (lbs)	Part Number	WT (lbs)	Part Number	WT (lbs)
1F2R	Drillmax®	1620422	2.0	*9880300	0.5	♦0700800	0.8
	Baker/Forum	480161422		051988300		051988400	
2F3R	Drillmax®	1620432	3.5	0130800	0.6	1350000	0.8
	Baker/Forum	480162432		016013800		017135000	
3F	Drillmax®	1630400	5.0	0130900	1.0	1360700	1.0
	Baker/Forum	480163400		016013900		017136700	
3½ IF	Drillmax®	1630600	6.0	^9820000	1.0	0750500	1.0
	Baker/Forum	480163600		051982000		052075500	
4R	Drillmax®	1640200	7.0	0140000	1.5	1160000	1.1
	Baker/Forum	480164200		016014000		017116000	
4F	Drillmax®	1640400	8.0	0140100	1.6	1360800	1.4
	Baker/Forum	480164400		016014100		017136800	
5R	Drillmax®	1650200	9.0	0140200	1.6	1360900	1.6
	Baker/Forum	480165200		016014200		017136900	
5F6R	Drillmax®	1650462	18.0	0140300	2.0	1360200	1.8
	Baker/Forum	480165462		016014300		017134200	

Model GC Full Flow Flapper Type with Auto Fill Standard							
Size	Brand	Float Valve		Rubber Repair Kit		Metal Repair Kit	
		Part Number	WT (lbs)	Part Number	WT (lbs)	Part Number	WT (lbs)
2F3R	Drillmax®	1920432	3.5	0130800	0.6	0130200	0.8
	Baker/Forum	480192432		016013800		016013200	
3F	Drillmax®	1930400	5.0	0130900	1.0	0130300	1.0
	Baker/Forum	480193400		016013900		016013300	
3½ IF	Drillmax®	1930600	6.0	^9820000	1.0	0700200	1.0
	Baker/Forum	480193600		051982000		052070200	
4R	Drillmax®	1940200	7.0	0140000	1.5	0130400	1.1
	Baker/Forum	480194200		016014000		016013400	
4F	Drillmax®	1940400	8.0	0140100	1.6	0130500	1.4
	Baker/Forum	480194400		016014100		016013500	
5R	Drillmax®	1950200	9.0	0140200	1.6	0130600	1.6
	Baker/Forum	480195200		016014200		016013600	
5F6R	Drillmax®	1950462	18.0	0140300	2.0	0130700	1.8
	Baker/Forum	480195462		016014300		016013700	

Model GCA Full Flow Ported Flapper Type with Auto Fill and Carbide Orifice Standard							
Size	Brand	Float Valve		Rubber Repair Kit		Metal Repair Kit	
		Part Number	WT (lbs)	Part Number	WT (lbs)	Part Number	WT (lbs)
2F3R	Drillmax®	1920433	3.5	0130800	0.6	1350000	0.8
	Baker/Forum	480192433		016013800		017135000	
3F	Drillmax®	1930401	5.0	0130900	1.0	1360700	1.0
	Baker/Forum	480193401		016013900		017136700	
3½ IF	Drillmax®	1930601	6.0	^9820000	1.0	0750500	1.0
	Baker/Forum	480193601		051982000		052075500	
4R	Drillmax®	1940201	7.0	0140000	1.5	1160000	1.1
	Baker/Forum	480194201		016014000		017116000	
4F	Drillmax®	1940401	8.0	0140100	1.6	1360800	1.4
	Baker/Forum	480194401		016014100		017136800	
5R	Drillmax®	1950201	9.0	0140200	1.6	1360900	1.6
	Baker/Forum	480195201		016014200		017136900	
5F6R	Drillmax®	1950463	18.0	0140300	2.0	1360200	1.8
	Baker/Forum	480195463		016014300		017134200	

Model GS Full Flow Flapper Type Standard							
Size	Brand	Float Valve		Rubber Repair Kit		Metal Repair Kit	
		Part Number	WT (lbs)	Part Number	WT (lbs)	Part Number	WT (lbs)
4F Short	Drillmax®	6040400	9.0	0140100	2.0	0130500	3.0
4F Short (with GA Flapper)	Drillmax®	6640400	9.0	0140100	2.0	1360800	3.0

Model FBP Plunger Type with Integral Baffle Plate Standard							
Size	Brand	Float Valve		Rubber Repair Kit		Metal Repair Kit	
		Part Number	WT (lbs)	Part Number	WT (lbs)	Part Number	WT (lbs)
3½ IF	Drillmax®	1330600-BP	7.5	0120600	1.0	0110500	2.0
4R	Drillmax®	1340200-BP	9.0	0120700	1.0	0110700	2.0
5F6R	Drillmax®	1350462-BP	19.0	0130000	1.1	0120000	5.0

*1F2R flapper type rubber kits do not have seal retaining rings and have O-Rings instead of Valve Seals.

♦1F2R flapper type metal kits do not have seal retaining rings.

^^ This kit is for use on Drillmax Float Valves.

Drillmax Drill Pipe Float Valves

PART NUMBER & REPAIR KIT CHART

H2S/HT 300 HNBR/HSN

Model F Plunger Type H2S/HT 300 HNBR/HSN							
Size	Brand	Float Valve		Rubber Repair Kit		Metal Repair Kit	
		Part Number	WT (lbs)	Part Number	WT (lbs)	Part Number	WT (lbs)
1R	Drillmax®	3010200	1.5	0810701	0.5	0840901	1.0
	Baker/Forum	480301200		071081701		071084901	
1F2R	Drillmax®	3010422	1.5	0810801	0.7	0850001	2.0
	Baker/Forum	480301422		071081801		071085001	
2F3R	Drillmax®	3020432	2.5	0810901	0.8	0850101	2.0
	Baker/Forum	480302432		071081901		071085101	
3F	Drillmax®	3030400	5.0	0820001	1.0	0850201	2.0
	Baker/Forum	480303400		071082001		071085201	
3½ IF	Drillmax®	3030600	6.0	0820101	1.0	0850301	2.0
	Baker/Forum	480303600		071082101		071085301	
4R	Drillmax®	3040200	7.0	0820201	1.0	0850401	2.0
	Baker/Forum	480304200		071082201		071085401	
4F	Drillmax®	3040400	10.0	0820301	1.0	0850501	3.0
	Baker/Forum	480304400		071082301		071085501	
5R	Drillmax®	3050200	9.5	0820401	1.0	0850601	4.0
	Baker/Forum	480305200		071082401		071085601	
5F6R	Drillmax®	3050462	19.0	0820501	1.1	0850701	5.0
	Baker/Forum	480305462		071082501		071085701	
6F	Drillmax®	3060400	28.0	0820603	2.0	0850803	8.0
	Baker/Forum	480306400		071082601		071085801	

Model FA Ported Plunger Type H2S/HT 300 HNBR/HSN							
Size	Brand	Float Valve		Rubber Repair Kit		Metal Repair Kit	
		Part Number	WT (lbs)	Part Number	WT (lbs)	Part Number	WT (lbs)
1R	Drillmax®	3210200	1.5	0810701	0.5	0840905	1.0
	Baker/Forum	480351200		071081705		071084905	
1F2R	Drillmax®	3210422	1.5	0810801	0.7	0850005	2.0
	Baker/Forum	480351422		071081805		071085005	
2F3R	Drillmax®	3220432	2.5	0810901	0.8	0850105	2.0
	Baker/Forum	480352432		071081905		071085105	
3F	Drillmax®	3230400	5.0	0820001	1.0	0850205	2.0
	Baker/Forum	480353400		071082005		071085205	
3½ IF	Drillmax®	3230600	6.0	0820101	1.0	0850305	2.0
	Baker/Forum	480353600		071082105		071085305	
4R	Drillmax®	3240200	7.0	0820201	1.0	0850405	2.0
	Baker/Forum	480354200		071082205		071085405	
4F	Drillmax®	3240400	10.0	0820301	1.0	0850505	3.0
	Baker/Forum	480354400		071082305		071085505	
5R	Drillmax®	3250200	9.5	0820401	1.0	0850605	4.0
	Baker/Forum	480355200		071082405		071085605	
5F6R	Drillmax®	3250462	19.0	0820501	1.1	0850705	5.0
	Baker/Forum	480355462		071082505		071085705	
6F	Drillmax®	3260400	28.0	0820603	2.0	0850805	8.0
	Baker/Forum	480356400		071082605		071085805	

Model G Full Flow Flapper Type H2S/HT 300 HNBR/HSN							
Size	Brand	Float Valve		Rubber Repair Kit		Metal Repair Kit	
		Part Number	WT (lbs)	Part Number	WT (lbs)	Part Number	WT (lbs)
1F2R	Drillmax®	3110422	1.5	*0820601	0.5	♦0850801	0.7
	Baker/Forum	480311422		051997200		051997300	
2F3R	Drillmax®	3120432	3.5	0820701	0.6	0850901	0.8
	Baker/Forum	480312432		071082701		071085901	
3F	Drillmax®	3130400	5.0	0820801	1.0	0860001	1.0
	Baker/Forum	480313400		071082801		071086001	
3½ IF	Drillmax®	3130500	6.0	^0820851	1.0	0870001	1.0
	Baker/Forum	480313600		052125001		052125101	
4R	Drillmax®	3140200	7.0	0820901	1.5	0860101	1.1
	Baker/Forum	480314200		071082901		071086101	
4F	Drillmax®	3140400	8.0	0830001	1.6	0860201	1.4
	Baker/Forum	480314400		071083001		071086201	
5R	Drillmax®	3150200	9.0	0830101	1.6	0860301	1.6
	Baker/Forum	480315200		071083101		071086301	
5F6R	Drillmax®	3150462	18.0	0830201	2.0	0860401	1.8
	Baker/Forum	480315462		071083201		071086401	

*1F2R flapper type rubber kits do not have seal retaining rings and have O-Rings instead of Valve Seals.
 ♦1F2R flapper type metal kits do not have seal retaining rings.
 ^^This kit is for use on Drillmax Float Valves.

Drillmax Drill Pipe Float Valves

PART NUMBER & REPAIR KIT CHART

H2S/HT 300 HNBR/HSN

Model GA Full Flow Ported Flapper Type with Carbide Orifice H2S/HT 300 HNBR/HSN

Size	Brand	Float Valve		Rubber Repair Kit		Metal Repair Kit	
		Part Number	WT (lbs)	Part Number	WT (lbs)	Part Number	WT (lbs)
1F2R	Drillmax®	4110422	1.5	*0820601	0.5	♦1850801	0.8
	Baker/Forum	480261422		051997200		052070802	
2F3R	Drillmax®	4120432	3.5	0820701	0.6	1850901	0.8
	Baker/Forum	480262432		071082701		017135001	
3F	Drillmax®	4130400	5.0	0820801	1.0	1860001	1.0
	Baker/Forum	480263400		071082801		017136701	
3½ IF	Drillmax®	4130500	6.0	^0820851	1.0	1870001	1.0
	Baker/Forum	480263600		052125001		052075502	
4R	Drillmax®	4140200	7.0	0820901	1.5	1860101	1.1
	Baker/Forum	480264200		071082901		017116002	
4F	Drillmax®	4140400	8.0	0830001	1.6	1860201	1.4
	Baker/Forum	480264400		071083001		017136801	
5R	Drillmax®	4150200	9.0	0830101	1.6	1860301	1.6
	Baker/Forum	480265200		071083101		017136901	
5F6R	Drillmax®	4150462	18.0	0830201	2.0	1860401	1.8
	Baker/Forum	480265462		071083201		017134201	

Model GC Full Flow Flapper Type with Auto Fill H2S/HT 300 HNBR/HSN

Size	Brand	Float Valve		Rubber Repair Kit		Metal Repair Kit	
		Part Number	WT (lbs)	Part Number	WT (lbs)	Part Number	WT (lbs)
2F3R	Drillmax®	3320432	3.5	0820701	0.6	0850901	0.8
	Baker/Forum	480332432		071082701		071085901	
3F	Drillmax®	480333400	5.0	0820801	1.0	0860001	1.0
	Baker/Forum	48033400		071082801		071086001	
3½ IF	Drillmax®	480333600	6.0	^0820851	1.0	0870001	1.0
	Baker/Forum	48033600		052125001		052125101	
4R	Drillmax®	3340200	7.0	0820901	1.5	0860101	1.1
	Baker/Forum	480334200		071082901		071086101	
4F	Drillmax®	3340400	8.0	0830001	1.6	0860201	1.4
	Baker/Forum	480334400		071083001		071086201	
5R	Drillmax®	3350200	9.0	0830101	1.6	0860301	1.6
	Baker/Forum	N/A		071083101		071086301	
5F6R	Drillmax®	3350462	18.0	0830201	2.0	0860401	1.8
	Baker/Forum	480335462		071083201		071086401	

Model GCA Full Flow Ported Flapper Type with Auto Fill and Carbide Orifice H2S/HT 300 HNBR/HSN

Size	Brand	Float Valve		Rubber Repair Kit		Metal Repair Kit	
		Part Number	WT (lbs)	Part Number	WT (lbs)	Part Number	WT (lbs)
2F3R	Drillmax®	3320433	3.5	0820701	0.6	1850901	0.8
	Baker/Forum	480452433		071082701		017135001	
3F	Drillmax®	3330401	5.0	0820801	1.0	1860001	1.0
	Baker/Forum	480453401		071082801		017136701	
3½ IF	Drillmax®	3330501	6.0	^0820851	1.0	1870001	1.0
	Baker/Forum	480453601		052125001		05207550	
4R	Drillmax®	3340201	7.0	0820901	1.5	1860101	1.1
	Baker/Forum	480454201		071082901		017116002	
4F	Drillmax®	3340401	8.0	0830001	1.6	1860201	1.4
	Baker/Forum	480454401		071083001		017136801	
5R	Drillmax®	3350201	9.0	0830101	1.6	1860301	1.6
	Baker/Forum	480455201		071083101		017136901	
5F6R	Drillmax®	3350463	18.0	0830201	2.0	1860401	1.8
	Baker/Forum	480455463		071083201		017134201	

Model GS Full Flow Flapper Type H2S/HT 300 HNBR/HSN

Size	Brand	Float Valve		Rubber Repair Kit		Metal Repair Kit	
		Part Number	WT (lbs)	Part Number	WT (lbs)	Part Number	WT (lbs)
4F Short	Drillmax®	6840400	9.0	0830001	2.0	0860201	3.0
4F Short <i>(with GA Flapper)</i>	Drillmax®	5940400	9.0	0830001	2.0	1860201	3.0

Model FBP Plunger Type with Integral Baffle Plate H2S/HT 300 HNBR/HSN

Size	Brand	Float Valve		Rubber Repair Kit		Metal Repair Kit	
		Part Number	WT (lbs)	Part Number	WT (lbs)	Part Number	WT (lbs)
3½ IF	Drillmax®	3030600-BP	7.5	0820101	1.0	0850301	2.0
4R	Drillmax®	3040200-BP	9.0	0820201	1.0	0850401	2.0
5F6R	Drillmax®	3050462-BP	19.0	0820501	1.1	0850701	5.0

Drillmax Drill Pipe Float Valves

PART NUMBER & REPAIR KIT CHART

H2S/HT 400 Viton®

Model F Plunger Type H2S/HT400 Viton®							
Size	Brand	Float Valve		Rubber Repair Kit		Metal Repair Kit	
		Part Number	WT (lbs)	Part Number	WT (lbs)	Part Number	WT (lbs)
1R	Drillmax®	3010200V	1.5	0810701V	0.5	0840901	1.0
	Baker/Forum	480361200		072081703		071084901	
1F2R	Drillmax®	3010422V	1.5	0810801V	0.7	0850001	2.0
	Baker/Forum	480361422		072081803		071085001	
2F3R	Drillmax®	3020432V	2.5	0810901V	0.8	0850101	2.0
	Baker/Forum	480362432		072081903		071085101	
3F	Drillmax®	3030400V	5.0	0820001V	1.0	0850201	2.0
	Baker/Forum	480363400		072082003		071085201	
3½ IF	Drillmax®	3030600V	6.0	0820101V	1.0	0850301	2.0
	Baker/Forum	480363600		072082103		071085301	
4R	Drillmax®	3040200V	7.0	0820201V	1.0	0850401	2.0
	Baker/Forum	480364200		072082203		071085401	
4F	Drillmax®	3040400V	10.0	0820301V	1.0	0850501	3.0
	Baker/Forum	480364400		072082303		071085501	
5R	Drillmax®	3050200V	9.5	0820401V	1.0	0850601	4.0
	Baker/Forum	480365200		072082403		071085601	
5F6R	Drillmax®	3050462V	19.0	0820501V	1.1	0850701	5.0
	Baker/Forum	480365462		072082503		071085701	
6F	Drillmax®	3060400V	28.0	0820603V	2.0	0850803	8.0
	Baker/Forum	480366400		072082603		071085801	

Model FA Ported Plunger Type H2S/HT400 Viton®							
Size	Brand	Float Valve		Rubber Repair Kit		Metal Repair Kit	
		Part Number	WT (lbs)	Part Number	WT (lbs)	Part Number	WT (lbs)
1R	Drillmax®	3210200V	1.5	0810701V	0.5	0840905	1.0
	Baker/Forum	480411200		072081705		071084905	
1F2R	Drillmax®	3210422V	1.5	0810801V	0.7	0850005	2.0
	Baker/Forum	480411422		072081805		071085005	
2F3R	Drillmax®	3220432V	2.5	0810901V	0.8	0850105	2.0
	Baker/Forum	480412432		072081905		071085105	
3F	Drillmax®	3230400V	5.0	0820001V	1.0	0850205	2.0
	Baker/Forum	480413400		072082005		071085205	
3½ IF	Drillmax®	3230600V	6.0	0820101V	1.0	0850305	2.0
	Baker/Forum	480413600		072082105		071085305	
4R	Drillmax®	3240200V	7.0	0820201V	1.0	0850405	2.0
	Baker/Forum	480414200		072082205		071085405	
4F	Drillmax®	3240400V	10.0	0820301V	1.0	0850505	3.0
	Baker/Forum	480414400		072082305		071085505	
5R	Drillmax®	3250200V	9.5	0820401V	1.0	0850605	4.0
	Baker/Forum	480415200		072082405		071085605	
5F6R	Drillmax®	3250462V	19.0	0820501V	1.1	0850705	5.0
	Baker/Forum	480415462		072082505		071085705	
6F	Drillmax®	3260400V	28.0	0820603V	2.0	0850805	8.0
	Baker/Forum	480416400		072082605		071085805	

Model G Full Flow Flapper Type H2S/HT400 Viton®							
Size	Brand	Float Valve		Rubber Repair Kit		Metal Repair Kit	
		Part Number	WT (lbs)	Part Number	WT (lbs)	Part Number	WT (lbs)
1F2R	Drillmax®	3110422V	1.5	*0820601V	0.5	♦0850801V	0.7
	Baker/Forum	480371422		051988303		051988403	
2F3R	Drillmax®	3120432V	3.5	0820701V	0.6	0850901V	0.8
	Baker/Forum	480372432		016013803		016013203	
3F	Drillmax®	3130400V	5.0	0820801V	1.0	0860001V	1.0
	Baker/Forum	480373400		016013903		016013303	
3½ IF	Drillmax®	3130500V	6.0	^0820851V	1.0	0870001V	1.0
	Baker/Forum	480373600		051982003		052070203	
4R	Drillmax®	3140200V	7.0	0820901V	1.5	0860101V	1.1
	Baker/Forum	480374200		016014003		016013403	
4F	Drillmax®	3140400V	8.0	0830001V	1.6	0860201V	1.4
	Baker/Forum	480374400		016014103		016013503	
5R	Drillmax®	3150200V	9.0	0830101V	1.6	0860301V	1.6
	Baker/Forum	480375200		016014203		016013603	
5F6R	Drillmax®	3150462V	18.0	0830201V	2.0	0860401V	1.8
	Baker/Forum	480375462		016014303		016013703	

*1F2R flapper type rubber kits do not have seal retaining rings and have O-Rings instead of Valve Seals.
 ♦1F2R flapper type metal kits do not have seal retaining rings.
 ^This kit is for use on Drillmax Float Valves.



Drillmax Drill Pipe Float Valves PART NUMBER & REPAIR KIT CHART H2S/HT 400 Viton®

Model GA Full Flow Ported Flapper Type with Carbide Orifice H2S/HT400 Viton®							
Size	Brand	Float Valve		Rubber Repair Kit		Metal Repair Kit	
		Part Number	WT (lbs)	Part Number	WT (lbs)	Part Number	WT (lbs)
1F2R	Drillmax®	4110422V	1.5	*0820601V	0.5	♦1850801V	0.8
	Baker/Forum	480441422		051988303		052070803	
2F3R	Drillmax®	4120432V	3.5	0820701V	0.6	1850901V	0.8
	Baker/Forum	480442432		016013803		017135003	
3F	Drillmax®	4130400V	5.0	0820801V	1.0	1860001V	1.0
	Baker/Forum	480443400		016013903		017136703	
3½ IF	Drillmax®	4130500V	6.0	^0820851V	1.0	1870001V	1.0
	Baker/Forum	480443600		051982003		052075503	
4R	Drillmax®	4140200V	7.0	0820901V	1.5	1860101V	1.1
	Baker/Forum	480444200		016014003		017116001	
4F	Drillmax®	4140400V	8.0	0830001V	1.6	1860201V	1.4
	Baker/Forum	480444400		016014103		017136803	
5R	Drillmax®	4150200V	9.0	0830101V	1.6	1860301V	1.6
	Baker/Forum	480445200		016014203		017136903	
5F6R	Drillmax®	4150462V	18.0	0830201V	2.0	1860401V	1.8
	Baker/Forum	480445462		016014303		017134203	

Model GC Full Flow Flapper Type with Auto Fill H2S/HT400 Viton®							
Size	Brand	Float Valve		Rubber Repair Kit		Metal Repair Kit	
		Part Number	WT (lbs)	Part Number	WT (lbs)	Part Number	WT (lbs)
2F3R	Drillmax®	3320432V	3.5	0820701V	0.6	0850901V	0.8
	Baker/Forum	480392432		016013803		016013203	
3F	Drillmax®	3330400V	5.0	0820801V	1.0	0860001V	1.0
	Baker/Forum	480393400		016013903		016013303	
3½ IF	Drillmax®	3330500V	6.0	^0820851V	1.0	0870001V	1.0
	Baker/Forum	N/A		051982003		052070203	
4R	Drillmax®	3340200V	7.0	0820901V	1.5	0860101V	1.1
	Baker/Forum	480394200		016014003		016013403	
4F	Drillmax®	3340400V	8.0	0830001V	1.6	0860201V	1.4
	Baker/Forum	480394400		016014103		016013503	
5R	Drillmax®	3350200V	9.0	0830101V	1.6	0860301V	1.6
	Baker/Forum	480395200		016014203		016013603	
5F6R	Drillmax®	3350462V	18.0	0830201V	2.0	0860401V	1.8
	Baker/Forum	480395462		016014303		016013703	

Model GCA Full Flow Ported Flapper Type with Auto Fill and Carbide Orifice H2S/HT400 Viton®							
Size	Brand	Float Valve		Rubber Repair Kit		Metal Repair Kit	
		Part Number	WT (lbs)	Part Number	WT (lbs)	Part Number	WT (lbs)
2F3R	Drillmax®	3320433V	3.5	0820701V	0.6	1850901V	0.8
	Baker/Forum	480192433		016013803		017135003	
3F	Drillmax®	3330401V	5.0	0820801V	1.0	1860001V	1.0
	Baker/Forum	480193401		016013903		017136703	
3½ IF	Drillmax®	3330501V	6.0	^0820851V	1.0	1870001V	1.0
	Baker/Forum	N/A		051982003		052075503	
4R	Drillmax®	3340201V	7.0	0820901V	1.5	1860101V	1.1
	Baker/Forum	480194201		016014003		017116001	
4F	Drillmax®	3340401V	8.0	0830001V	1.6	1860201V	1.4
	Baker/Forum	480194401		016014103		017136803	
5R	Drillmax®	3350201V	9.0	0830101V	1.6	1860301V	1.6
	Baker/Forum	480195201		016014203		017136903	
5F6R	Drillmax®	3350463V	18.0	0830201V	2.0	1860401V	1.8
	Baker/Forum	480195463		016014303		016013703	

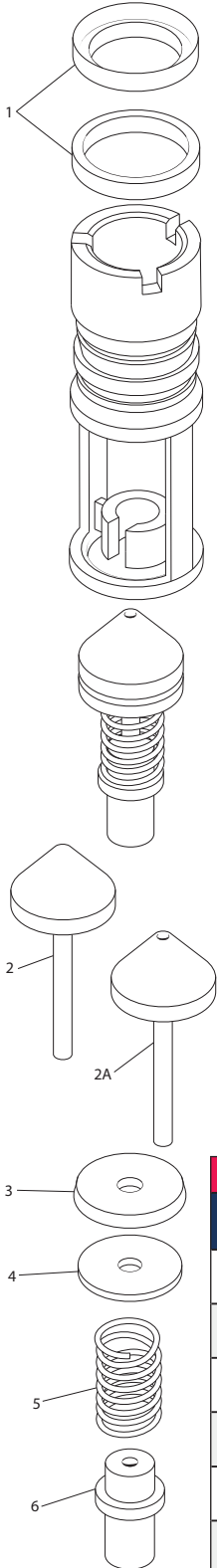
Model GS Full Flow Flapper Type H2S/HT400 Viton®							
Size	Brand	Float Valve		Rubber Repair Kit		Metal Repair Kit	
		Part Number	WT (lbs)	Part Number	WT (lbs)	Part Number	WT (lbs)
4F Short	Drillmax®	6840400V	9.0	0830001V	2.0	0860201V	3.0
4F Short (with GA Flapper)	Drillmax®	5940400V	9.0	0830001V	2.0	1860201V	3.0

Model FBP Plunger Type with Integral Baffle Plate H2S/HT400 Viton®							
Size	Brand	Float Valve		Rubber Repair Kit		Metal Repair Kit	
		Part Number	WT (lbs)	Part Number	WT (lbs)	Part Number	WT (lbs)
3½ IF	Drillmax®	3030600V-BP	7.5	0820101V	1.0	0850301	2.0
4R	Drillmax®	3040200V-BP	9.0	0820201V	1.0	0850401	2.0
5F6R	Drillmax®	3050462V-BP	19.0	0820501V	1.1	0850701	5.0

Drillmax Drill Pipe Float Valves

REPLACEMENT PART NUMBER & SPECIFICATION CHART

Model F, FA, FBP, & FBPA



Model F, FA, FBP and FBPA Float Valve Standard											
Ref.	Description & Material	IR	IF2R	2F3R	3F	3 1/2 IF	4R	4F	5R	5F6R	6F
1	Side Seal Buna	1310202	1310425	1320434	1330403	1330603	1340203	1340402	1350203	1350464	1360403
2	Valve - F, FBP Steel (Plunger)	1310201	1310424	1320438	1330602	1330602	1340202	1340405	1350207	1350468	1360402
2a	Valve - FA, FBPA Steel (Plunger Ported)	1210207	1210424	1220438	1230602	1230602	1240202	1240405	1250207	1250468	1260402
3	Valve - Seal Buna	1310203	1310426	1320435	1330604	1330604	1340204	1340403	1350204	1350465	1360404
4	Valve Seal Disc Steel	1310204	1310427	1320439	1330605	1330605	1340205	1340406	1350208	1350469	1360405
5	Valve Spring Steel	1310205	1310428	1320436	1330606	1330606	1340206	1350466	1350205	1350466	1360406
6	Valve Guide Steel	1310429	1310429	1320437	1330607	1330607	1340207	1340404	1350206	1350467	1360407

Model F, FA, FBP and FBPA Float Valve H2S/HT 300 HNBR/HSN											
Ref.	Description & Material	IR	IF2R	2F3R	3F	3 1/2 IF	4R	4F	5R	5F6R	6F
1	Side Seal HNBR	1310202HT	1310425HT	1320434HT	1330403HT	1330603HT	1340203HT	1340402HT	1350203HT	1350464HT	1360403HT
2	Valve - F, FBP Steel (Plunger)	1310201	1310424	1320438	1330602	1330602	1340202	1340405	1350207	1350468	1360402
2a	Valve - FA, FBPA Steel (Plunger Ported)	1210207	1210424	1220438	1230602	1230602	1240202	1240405	1250207	1250468	1260402
3	Valve - Seal HNBR	1310203HT	1310426HT	1320435HT	1330604HT	1330604HT	1340204HT	1340403HT	1350204HT	1350465HT	1360404HT
4	Valve Seal Disc Steel	1310204	1310427	1320439	1330605	1330605	1340205	1340406	1350208	1350469	1360405
5	Valve Spring Inconel® 750	1310205-INC	1310428-INC	1320436-INC	1330606-INC	1330606-INC	1340206-INC	1350466-INC	1350205-INC	1350466-INC	1360406-INC
6	Valve Guide Steel	1310429	1310429	1320437	1330607	1330607	1340207	1340404	1350206	1350467	1360407

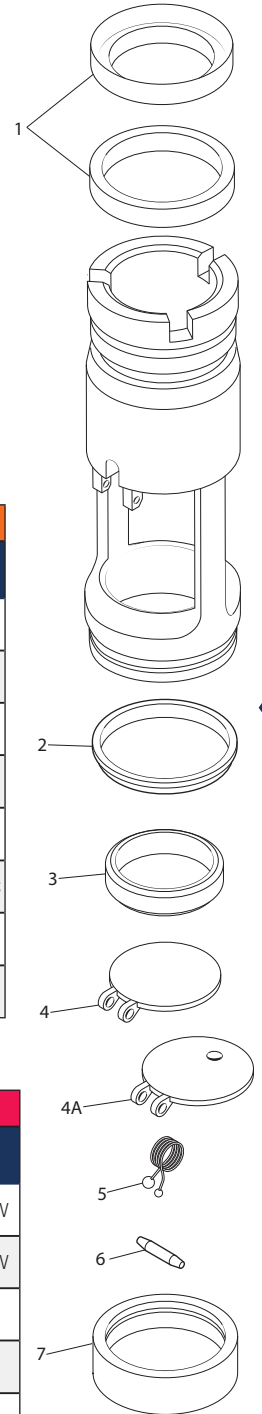
Model F, FA, FBP and FBPA Float Valve H2S/HT400 Viton®											
Ref.	Description & Material	IR	IF2R	2F3R	3F	3 1/2 IF	4R	4F	5R	5F6R	6F
1	Side Seal Viton®	1310202HTV	1310425HTV	1320434HTV	1330403HTV	1330603HTV	1340203HTV	1340402HTV	1350203HTV	1350464HTV	1360403HTV
2	Valve - F, FBP Steel (Plunger)	1310201	1310424	1320438	1330602	1330602	1340202	1340405	1350207	1350468	1360402
2a	Valve - FA, FBPA Steel (Plunger Ported)	1210207	1210424	1220438	1230602	1230602	1240202	1240405	1250207	1250468	1260402
3	Valve - Seal Viton®	1310203HTV	1310426HTV	1320435HTV	1330604HTV	1330604HTV	1340204HTV	1340403HTV	1350204HTV	1350465HTV	1360404HTV
4	Valve Seal Disc Steel	1310204	1310427	1320439	1330605	1330605	1340205	1340406	1350208	1350469	1360405
5	Valve Spring Inconel® 750	1310205-INC	1310428-INC	1320436-INC	1330606-INC	1330606-INC	1340206-INC	1350466-INC	1350205-INC	1350466-INC	1360406-INC
6	Valve Guide Steel	1310429	1310429	1320437	1330607	1330607	1340207	1340404	1350206	1350467	1360407

Model G, GA, GC, GCA & GS

Model G, GA, GC, GCA and GS Float Valve Standard										
Ref.	Description & Material	IF2R	2F3R	3F	3½ IF	4R	4F	4F GS	5R	5F6R
1	Side Seal Buna	1310425	1320434	1330403	1330603	1340203	1340402	1340402	1350203	1350464
2	Valve Seal Buna	1510427	1520436	1530404	1530404	1540204	1540404	1540404	1550204	1550466
3	Seal Retaining Ring Steel	N/A	1520435	1530403	1530403	1540203	1540403	1540403	1550203	1550465
4	Flapper (G, GC, GS) Steel	1510424	1520437	1530405	1530405	1540205	1540405	1540405	1550205	1550467
4a	Flapper (GA, GCA) Steel (Ported)	1610424	1620437	1630405	1630405	1640205	1640405	1640405	1650205	1650467
5	Spring Assembly Steel	1510428A	1520434A	1530402A	1530402A	1540202A	1550202A	1550202A	1550202A	1550464A
6	Pin Buna	1510426	1520439	1520439	1530439	1540207	1540207	1540207	1550206	1550469
7	Shock Absorber Buna	1510425	1520440	1530440	♦1530540	1540208	1540407	1540407	1550207	1550470

Model G, GA, GC, GCA and GS Float Valve H2S/HT 300 HNBR/HSN										
Ref.	Description & Material	IF2R	2F3R	3F	3½ IF	4R	4F	4F GS	5R	5F6R
1	Side Seal HNBR	1310425HT	1320434HT	1330403HT	1330603HT	1340203HT	1340402HT	1340402HT	1350203HT	1350464HT
2	Valve Seal HNBR	1510427HT	1520436HT	1530404HT	1530404HT	1540204HT	1540404HT	1540404HT	1550204HT	1550466HT
3	Seal Retaining Ring Steel	N/A	1520435	1530403	1530403	1540203	1540403	1540403	1550203	1550465
4	Flapper (G, GC, GS) Steel	1510424	1520437	1530405	1530405	1540205	1540405	1540405	1550205	1550467
4a	Flapper (GA, GCA) Steel (Ported)	1610424	1620437	1630405	1630405	1640205	1640405	1640405	1650205	1650467
5	Spring Assembly Inconel® 750	1510428A-INC	1520434A-INC	1530402A-INC	1530402A-INC	1540202A-INC	1550202A-INC	1550202A-INC	1550202A-INC	1550464A-INC
6	Pin Viton®	1510426HTV	1520439HTV	1520439HTV	1530439HTV	1540207HTV	1540207HTV	1540207HTV	1550206HTV	1550469HTV
7	Shock Absorber HNBR	1510425HT	1520440HT	1530440HT	♦1530540HT	1540208HT	1540407HT	1540407HT	1550207HT	1550470HT

Model G, GA, GC, GCA and GS Float Valve H2S HT400 Viton®										
Ref.	Description & Material	IF2R	2F3R	3F	3½ IF	4R	4F	4F GS	5R	5F6R
1	Side Seal Viton®	1310425HTV	1320434HTV	1330403HTV	1330603HTV	1340203HTV	1340402HTV	1340402HTV	1350203HTV	1350464HTV
2	Valve Seal Viton®	1510427HTV	1520436HTV	1530404HTV	1530404HTV	1540204HTV	1540404HTV	1540404HTV	1550204HTV	1550466HTV
3	Seal Retaining Ring Steel	N/A	1520435	1530403	1530403	1540203	1540403	1540403	1550203	1550465
4	Flapper (G, GC, GS) Steel	1510424	1520437	1530405	1530405	1540205	1540405	1540405	1550205	1550467
4a	Flapper (GA, GCA) Steel (Ported)	1610424	1620437	1630405	1630405	1640205	1640405	1640405	1650205	1650467
5	Spring Assembly Inconel® 750	1510428A-INC	1520434A-INC	1530402A-INC	1530402A-INC	1540202A-INC	1550202A-INC	1550202A-INC	1550202A-INC	1550464A-INC
6	Pin Viton®	1510426HTV	1520439HTV	1520439HTV	1530439HTV	1540207HTV	1540207HTV	1540207HTV	1550206HTV	1550469HTV
7	Shock Absorber Viton®	1510425HTV	1520440HTV	1530440HTV	♦1530540HTV	1540208HTV	1540407HTV	1540407HTV	1550207HTV	1550470HTV



♦ For use on Drillmax Float Valve only

Drillmax Drill Pipe Float Valves

SIZING GUIDE



Tool Joint Types	Drill Pipe Float Valve Sizes									
	1R	1F2R	2F3R	3F	3½ IF	4R	4F	5R	5F 6R	6F
API Regular	2¾	2¾	3½			4½		5½ - 5¼*	6½ - 7¼‡	8½
Hughes or Reed Acme Regular	2¾	2¾	3½			4½		5½ - 5¼*	6½	
Union Tool		2¾ 3½					4½	5½ - 5¼*	6½‡	
Hughes or Reed Double Streamline		2¾ 2¾	3½	4 4½			5	5½ - 5¼*		
API Full Hole		2¾	2¾	3½	4	4½	4½*			6½*
Reed Acme Full Hole				3½*			4½*		5½ - 5¼*	
Hughes Acme Streamline		2¾	2¾	3½*			4½*		5½ - 5¼*	
Hughes Xtra Hole			2¾	3½			4½	5	5½ - 5¼*	
Reed Semi-Internal Flush			2¾	3½			4½	5		
API Internal Flush		2¾	2¾		3½		4	4½*		
Hydril Type "IF" (Int. Flush Ext. Upset)		2¾*	2¾*	3½*				4½	5	
Hydril "EIU" (Ext. Int. Upset)				3½		4	4½		5½ - 5¼*	6½
Hydril Type "F" (External Flush)	2¾ 3½*			4½ 5		5½ - 5¼		6½		
Hughes Ext. Flush Acme Type		3½	4½			5½ - 5¼		6½		
Hughes Ext. Flush Full Hole Type				4½						

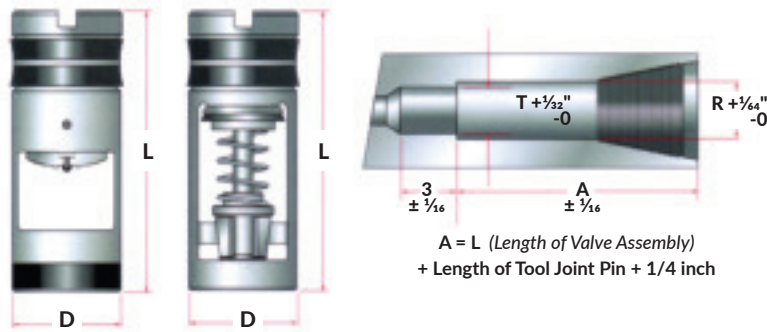
Dimensions shown in inches

* Float sub in these sizes has smaller Internal Diameter (ID) than standard tool joint.

‡ Interchangeable

Drill Pipe Float Valve Dimensional Data

Model G I.D. of Valve	Model F I.D. of Valve	Size of Valve	D Diameter of Valve (Inches)	R (D + 1/32) Diameter of Recess for Valve (Inches)	L Length of Valve (Inches)	T* Diameter of Recess for Baffle Plate (Inches)
N/A	1	1R	1 ²¹ / ₃₂	1 ¹¹ / ₁₆	5 ⁷ / ₈	1 ³ / ₁₆
1	1 ¹ / ₄	1F2R	1 ²⁹ / ₃₂	1 ¹⁵ / ₁₆	6 ¹ / ₄	1 ¹ / ₂
1 ¹ / ₄	1 ⁵ / ₁₆	2F3R	2 ¹³ / ₃₂	2 ⁷ / ₁₆	6 ¹ / ₂	1 ²⁹ / ₃₂
1 ⁵ / ₈	1 ⁷ / ₈	3F	2 ¹³ / ₁₆	2 ²⁷ / ₃₂	10	2 ⁷ / ₁₆
1 ⁵ / ₈	1 ⁷ / ₈	3 ¹ / ₂ IF	3 ¹ / ₈	3 ³ / ₃₂	10	2 ¹¹ / ₁₆
1 ³ / ₂	2 ³ / ₁₆	4R	3 ¹⁵ / ₃₂	3 ¹ / ₂	8 ⁹ / ₁₆	2 ¹⁵ / ₁₆
2 ³ / ₁₆	2 ¹ / ₂	4F	3 ²¹ / ₃₂	3 ¹¹ / ₁₆	12	3 ¹ / ₄
2 ¹ / ₄	2 ³ / ₄	5R	3 ⁷ / ₈	3 ²⁹ / ₃₂	9 ³ / ₄	3 ³ / ₈
2 ⁷ / ₈	3 ¹ / ₄	5F6R	4 ²⁵ / ₃₂	4 ¹³ / ₁₆	11 ³ / ₄	4 ³ / ₃₂
	4 ¹ / ₈	6F	5 ¹¹ / ₁₆	5 ²³ / ₃₂	14 ⁵ / ₈	5 ³ / ₁₆



A = L (Length of Valve Assembly)
+ Length of Tool Joint Pin + 1/4 inch

* If this diameter is the same or smaller than standard tool joint ID disregard it.

Bit and Shank Sizes

Bit Size (inches)	3 ¹ / ₄	3 ³ / ₈	4 ¹ / ₂	4 ³ / ₄	5 ¹ / ₂	6	6 ¹ / ₈	6 ¹ / ₄	6 ¹ / ₂	6 ³ / ₄	7 ¹ / ₈	8 ¹ / ₄
Standard API Pin Shank Size (inches)	2 ³ / ₈	2 ³ / ₈	2 ³ / ₈	2 ⁷ / ₈	3 ¹ / ₂	3 ¹ / ₂	3 ¹ / ₂	3 ¹ / ₂	3 ¹ / ₂	3 ¹ / ₂	4 ¹ / ₂	4 ¹ / ₂

Bit Size (inches)	8 ¹ / ₂	8 ³ / ₄	9 ¹ / ₂	9 ³ / ₄	10 ¹ / ₂	11	12 ¹ / ₄	13 ¹ / ₂	14 ³ / ₄	17 ¹ / ₂	20	24	25
Standard API Pin Shank Size (inches)	4 ¹ / ₂	4 ¹ / ₂	6 ⁵ / ₈	6 ⁵ / ₈	6 ⁵ / ₈	6 ⁵ / ₈	6 ⁵ / ₈	6 ⁵ / ₈	7 ⁵ / ₈	7 ⁵ / ₈	7 ⁵ / ₈	7 ⁵ / ₈	7 ⁵ / ₈

Drill Pipe Float Valve Subs*

API Regular Threads - Box or Pin

Thread Size and Type	Outside Diameter (O.D.)	Inside Diameter (I.D.)	Length	Float Valve Size
2 ³ / ₈	3 ³ / ₈	1	18	1R
2 ⁷ / ₈	3 ³ / ₄	1 ¹ / ₄	20	1F2R
3 ¹ / ₂	4 ¹ / ₄	1 ¹ / ₂	20	2F3R
4 ¹ / ₂	5 ¹ / ₂	2 ¹ / ₄	24	4R
5 ¹ / ₂	6 ¹ / ₄	2 ³ / ₄	28	5R
6 ¹ / ₈	7 ¹ / ₄	3 ¹ / ₂	30	5F6R
7 ¹ / ₈	8 ¹ / ₈	4	30	5F6R
8 ¹ / ₈	10	4 ³ / ₄	30	6F

API Full Hole - Box or Pin

Thread Size and Type	Outside Diameter (O.D.)	Inside Diameter (I.D.)	Length	Float Valve Size
2 ⁷ / ₈	4 ¹ / ₄	2 ³ / ₈	20	2F3R
3 ¹ / ₂	4 ⁵ / ₈	2 ⁷ / ₁₆	24	3F
4	5 ¹ / ₄	2 ¹³ / ₁₆	24	3 ¹ / ₂ IF
4 ¹ / ₂	5 ³ / ₄	3	28	4F
5 ¹ / ₂	7	4	30	5F6R
6 ¹ / ₈	8	5	30	6F

API Internal Flush (IF) - Box or Pin

Thread Size and Type	Outside Diameter (O.D.)	Inside Diameter (I.D.)	Length	Float Valve Size
2 ³ / ₈	3 ³ / ₈	1 ³ / ₄	18	1F2R
2 ⁷ / ₈	4 ¹ / ₈	2 ³ / ₈	20	2F3R
3 ¹ / ₂	4 ¹ / ₄	2 ¹¹ / ₁₆	24	3 ¹ / ₂ IF
4	5 ¹ / ₄	3 ¹ / ₄	28	4F
4 ¹ / ₂	6 ¹ / ₈	3 ³ / ₄	28	5R
5 ¹ / ₂	7 ¹ / ₈	4 ¹³ / ₁₆	30	5F6R
6 ¹ / ₈	8 ³ / ₄	5 ²⁹ / ₃₂	30	6F

* Sub dimensions shown in inches (For reference only.)

Plunger Style Repair Kits



Model F, FA, FBP, & FBPA Rubber

- 8 ea Side Seals
- 2 ea Valve Seals



Model F and FBP Metal

- 3 ea Valve Springs
- 1 ea Valve Guide
- 1 ea Plunger Valve
- 1 ea Valve Seal Disc



Model FA & FBPA Ported Plunger Metal

- 3 ea Valve Springs
- 1 ea Valve Guide
- 1 ea Plunger Valve
- 1 ea Valve Seal Disc

Flapper Style Repair Kits

(Except for size 1F2R)



Model G, GA, GC, GCA, and GS Rubber

- 8 ea Side Seals
- 2 ea Valve Seals
- 1 ea Shock Absorber
- 1 ea Seal Retaining Ring



Model G, GC, and GS Metal

- 1 ea Seal Retaining Ring
- 3 ea Hinge Pins
- 3 ea Spring Assemblies
- 1 ea Flapper Valve



Model GA, GCA and GS Ported Flapper Metal

- 1 ea Seal Retaining Ring
- 3 ea Hinge Pins
- 3 ea Spring Assemblies
- 1 ea Flapper Valve

1F2R Flapper Style Repair Kits



Model G and GA 1F2R Rubber

- 8 ea Side Seals
- 2 ea Valve Seals
- 1 ea Shock Absorber



Model G 1F2R Metal

- 3 ea Hinge Pins
- 3 ea Spring Assemblies
- 1 ea Flapper Valve



Model GA 1F2R Ported Flapper Metal

- 3 ea Hinge Pins
- 3 ea Spring Assemblies
- 1 ea Flapper Valve



Baffle Plates For Use On Bit

TOOL JOINT Size (Inches)	Type	FLOAT VALVE Size	Weight (lbs)	Hole Diameter (Inches)	Height (Inches)	Outside Diameter (O.D.) (Inches)	BAFFLE PLATE Part Number
2 $\frac{1}{8}$ API Regular	Spider	1F2R	0.5	$\frac{1}{16}$	$1\frac{1}{16}$	$1\frac{1}{16}$	9170010
3 $\frac{1}{2}$ API Regular	Ring	2F3R	0.4	$\frac{3}{4}$	$\frac{3}{4}$	$2\frac{1}{32}$	9170020
4 $\frac{1}{2}$ API Regular	Ring	4R	0.8	$1\frac{1}{8}$	$1\frac{1}{4}$	$3\frac{3}{32}$	9170030
5 $\frac{1}{16}$ API Regular	Ring	5R	1.3	$1\frac{1}{4}$	$1\frac{1}{4}$	$3\frac{1}{16}$	9170040
6 $\frac{1}{8}$ API Regular	Ring	5F6R	1.5	$1\frac{1}{4}$	$1\frac{1}{2}$	$4\frac{1}{8}$	9170050
7 $\frac{1}{8}$ API Regular	Ring	5F6R	1.7	$1\frac{1}{8}$	$1\frac{1}{2}$	$5\frac{1}{16}$	9170060
8 $\frac{1}{8}$ API Regular	Ring	6F	2.2	$1\frac{1}{8}$	$1\frac{1}{2}$	$6\frac{1}{32}$	9170070

Baffle Plates For Use In Tool Joints

TOOL JOINT Size (Inches)	Type	FLOAT VALVE Size	Weight (lbs)	Hole Diameter (Inches)	Height (Inches)	Outside Diameter (O.D.) (Inches)	BAFFLE PLATE Part Number
3 $\frac{1}{2}$ API Full Hole	Spider	3F	0.6	1	1	$2\frac{3}{4}$	9170110
4 $\frac{1}{2}$ API Full Hole	Ring	4F	0.9	$1\frac{1}{8}$	$1\frac{1}{4}$	$3\frac{3}{8}$	9170120
5 $\frac{1}{16}$ API Full Hole	Ring	5F6R	1.5	$1\frac{1}{4}$	$1\frac{1}{8}$	$4\frac{1}{8}$	9170130
6 $\frac{1}{8}$ API Full Hole	Ring	6F	2.8	$1\frac{1}{4}$	$1\frac{1}{8}$	$5\frac{1}{8}$	9170140
2 $\frac{1}{8}$ API Internal Flush	Spider	2F3R	0.7	1	$1\frac{1}{16}$	$2\frac{1}{32}$	9170400
3 $\frac{1}{2}$ API Internal Flush	Ring	3 $\frac{1}{2}$ IF	0.7	$1\frac{1}{8}$	$1\frac{1}{4}$	$3\frac{3}{64}$	9170410
4 $\frac{1}{2}$ API Internal Flush	Ring	5R	1.3	$1\frac{1}{4}$	$1\frac{1}{2}$	$4\frac{7}{32}$	9170420
2 $\frac{1}{8}$ API Internal Flush	Spider	2F3R	0.7	1	$\frac{7}{8}$	$2\frac{1}{2}$	9170430
4 API Internal Flush (4 $\frac{1}{2}$ XH)	Ring	4F	1.0	$1\frac{1}{4}$	$1\frac{1}{4}$	$3\frac{3}{8}$	9170440

Baffle Plates For Use on Drill Pipe Float Valves

TOOL JOINT Size (Inches)	Type	FLOAT VALVE Size	Weight (lbs)	Hole Diameter (Inches)	Height (Inches)	Outside Diameter (O.D.) (Inches)	BAFFLE PLATE Part Number
3 $\frac{1}{2}$ API Full Hole	Spider	3F	0.6	1	$1\frac{1}{4}$	$2\frac{5}{8}$	9170210
4 $\frac{1}{2}$ API Full Hole	Spider	4F	0.7	$\frac{1}{16}$	$1\frac{1}{32}$	$3\frac{1}{16}$	9170220
4 $\frac{1}{2}$ API Regular	Spider	4R	0.7	$\frac{1}{16}$	$1\frac{1}{32}$	$3\frac{1}{16}$	9170220
5 $\frac{1}{16}$ API Regular	Spider	5R	0.7	$\frac{1}{16}$	$1\frac{1}{32}$	$3\frac{1}{16}$	9170220
5 $\frac{1}{16}$ API Full Hole	Spider	5F6R	1.0	$1\frac{1}{4}$	$1\frac{1}{16}$	$4\frac{1}{16}$	9170230
6 $\frac{1}{8}$ API Regular	Spider	5F6R	1.0	$1\frac{1}{4}$	$1\frac{1}{16}$	$4\frac{1}{16}$	9170230
6 $\frac{1}{8}$ API Full Hole	Spider	6F	1.0	$1\frac{1}{4}$	$1\frac{1}{2}$	$5\frac{1}{16}$	9170240
3 $\frac{1}{2}$ API Internal Flush	Spider	3 $\frac{1}{2}$ IF	0.6	$\frac{1}{16}$	$1\frac{1}{32}$	$3\frac{1}{16}$	9170250

